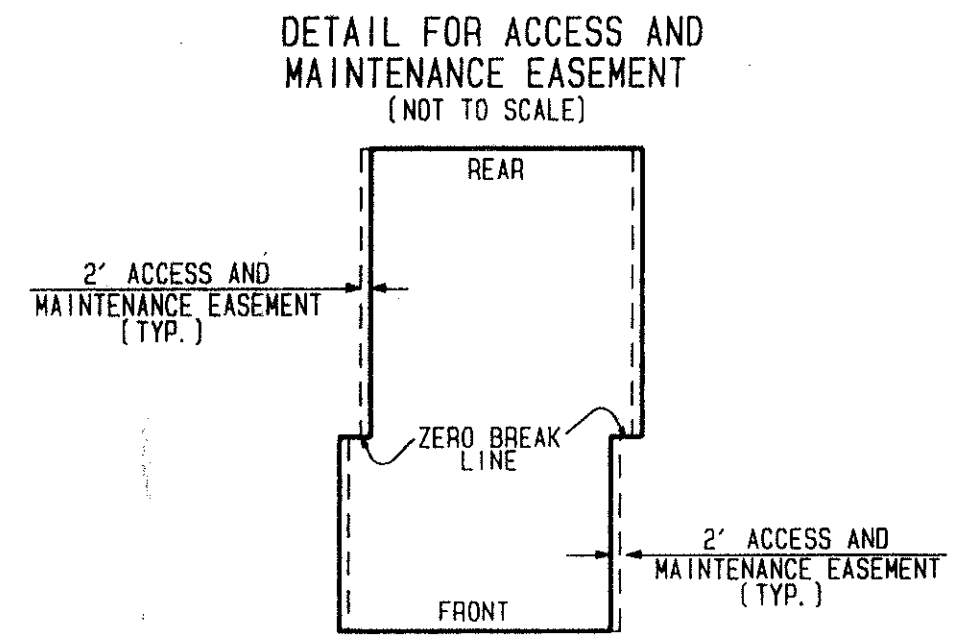


# ADDISON RESERVE PARCELS ONE & TWO

PART OF GLENEAGLES/POLO CLUB WEST P. U. D.  
BEING A REPLAT OF TRACTS 1 AND 2  
ADDISON RESERVE PLAT ONE (P. B. 75, PGS. 143-149)  
SITUATE IN SECTION 27, TOWNSHIP 46 SOUTH  
RANGE 42 EAST  
PALM BEACH COUNTY, FLORIDA  
APRIL, 1995 SHEET 4 OF 4

COORDINATE NOTE:  
ALL DISTANCES ARE (ROUND)  
SCALE FACTOR - 1.0000242  
N89°19'27"E (Plat) - 00°00'07" Bearing  
N89°19'34"E (Grid) - Clockwise Rotation  
North line of the NW 1/4  
Section 27-46-42  
Basis of Bearing

COORDINATES SHOWN ARE GRID  
DATUM - NAD 83 1990 ADJUSTMENT  
ZONE - FLORIDA EAST  
LINEAR UNIT - US SURVEY FEET  
COORDINATE SYSTEM - 1983 STATE PLANE  
TRANSVERSE MERCATOR PROJECTION  
GROUND DISTANCE X SCALE FACTOR = GRID DISTANCE



NOTE: AN ACCESS AND MAINTENANCE EASEMENT, 2 FEET IN WIDTH, EXISTS ON EACH LOT FROM THE ZERO BREAK LINE TO THE FRONT, AND FROM THE ZERO BREAK LINE TO THE REAR, ADJACENT TO AND CONTIGUOUS WITH THE ZERO LOT LINE OF THE ADJOINING LOT. THIS EASEMENT IS FOR ACCESS AND MAINTENANCE AND IS IN FAVOR OF THE ADJOINING LOT, ITS SUCCESSORS AND ASSIGNS, WITHOUT RECOURSE TO PALM BEACH COUNTY.

SEE "DETAIL FOR ACCESS AND MAINTENANCE EASEMENT".

**GLENEAGLES/POLO CLUB WEST PUD  
ADDISON RESERVE  
PARCELS 1 & 2**

STATE OF FLORIDA  
COUNTY OF PALM BEACH

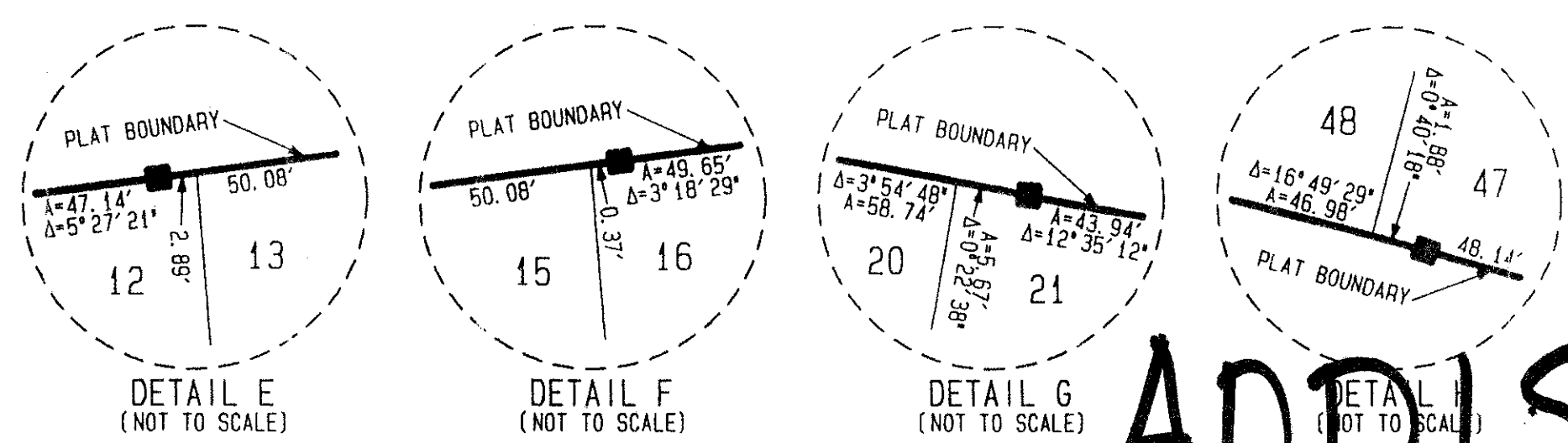
THIS PLAT WAS FILED FOR RECORD  
THIS \_\_\_\_\_ DAY OF \_\_\_\_\_  
AD. 1995 AND DULY RECORDED  
IN PLAT BOOK \_\_\_\_\_ ON PAGES \_\_\_\_\_  
AND \_\_\_\_\_

DOROTHY H. WILKEN, CLERK  
BY: \_\_\_\_\_ D. C.

CIRCUIT COURT SEAL

SUBDIVISION ADDISON RESERVE PARCELS ONE & TWO PAGE 7  
BOOK 76 FLOOD MAP #2154  
FLOOD ZONE B ZONING RT5  
QUAD # 37 ZIP CODE 33446  
SE 80-215 PUD NAME GLENEAGLES/POLO CLUB WEST

- LEGEND:
- L.M.D.D. LAKE WORTH DRAINAGE DISTRICT
  - FPL FLORIDA POWER & LIGHT
  - ORB OFFICIAL RECORD BOOK
  - PCBO PALM BEACH COUNTY
  - PRM PERMANENT REFERENCE MONUMENT
  - PLAT BOOK
  - PP PAGES
  - PS PASSES
  - U.E. UTILITY EASEMENT
  - D.E. DRAINAGE EASEMENT
  - TWP TOWNSHIP
  - RANGE
  - NON-RADIAL NON-RADIAL CENTERLINE
  - PERMANENT CONTROL POINT
  - PERMANENT REFERENCE MONUMENT SET PLS # 4763
  - PERMANENT REFERENCE MONUMENT FOUND
  - L.M.A.E. LAKE MAINTENANCE ACCESS EASEMENT
  - L.M.E.E. LAKE MAINTENANCE EASEMENT
  - L.A.E.E. LIMITED ACCESS EASEMENT
  - A.M.E.E. ACCESS AND MAINTENANCE EASEMENT
  - R/W RIGHT OF WAY
  - EASE EASEMENT
  - PUD PLANNED UNIT DEVELOPMENT
  - B.E. BUFFER EASEMENT
  - NR NON-RADIAL
  - TYP. TYPICAL



# ADDISON RESERVE PARCELS 1 & 2

Rev. 7-07-95  
Rev. 5-18-95  
CADD FILE  
TWKCRP13

THIS INSTRUMENT WAS PREPARED BY MARY HANNA CLODFELTER, P.L.S., IN THE OFFICES OF MOCK, ROOS & ASSOCIATES, INC., 5720 CORPORATE WAY, WEST PALM BEACH, FLORIDA 33407.

**MOCK, ROOS & ASSOCIATES, INC.**  
5720 CORPORATE WAY, WEST PALM BEACH, FL. 33407 (407) 683-3113

ADDISON RESERVE PARCELS ONE & TWO  
PART OF GLENEAGLES/POLO CLUB WEST P. U. D.  
SECTION 27, TOWNSHIP 46 SOUTH, RANGE 42 EAST

94182.01/02 46-42-27-41

PET. 80-215  
Alloc #0001  
5/3/3/K

0230-015

7617